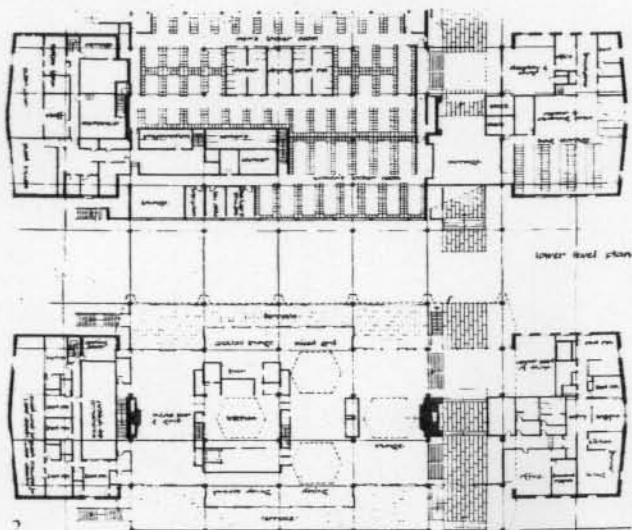


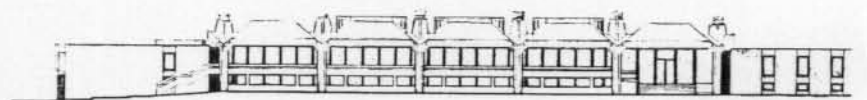
1

SUMMERLEA GOLF AND COUNTRY CLUB, CANADA

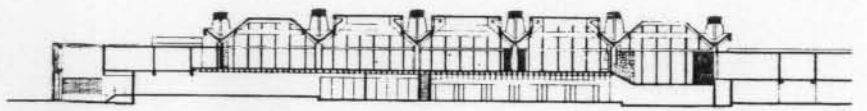
Affleck Desbarats Dimakopoulos Lebensold Sise αρχιτέκτονες



2



North elevation



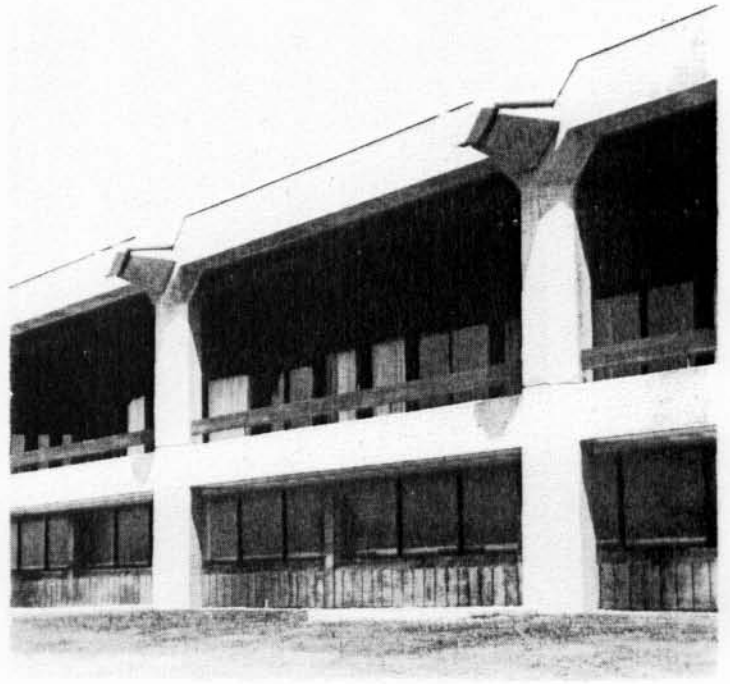
longitudinal sect





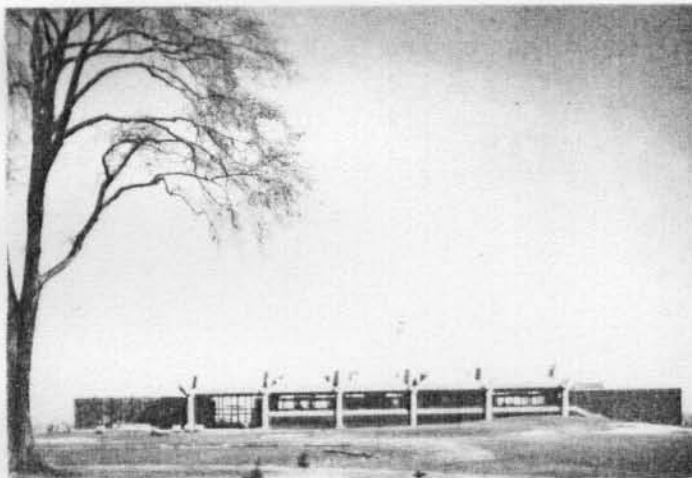
4

1. Λεπτομέρεια. 2. *Ανω: ισόγειο. Κάτω: όροφος. 3. *Όψεις, τομή.
4. Lounge. 5. Λεπτομέρεια. 6 + 7. Γενική όψις, Μερική είσοδος.

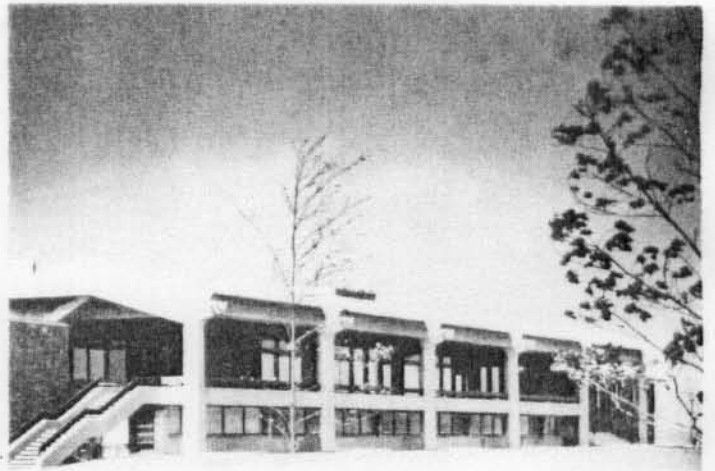


5

1. Detail. 2. Top: ground floor. Bottom: floor. 3. Elevation, section. 4. Lounge. 5. Detail. 6 + 7. General view, part view.



6



7

Τò κτίσμα δεσπόζει μιὰς περιοχῆς πού ἀνοίγει τήν θέα της πρὸς τήν λίμνη St. Louis. Οἱ ἀρχιτέκτονες αἰσθάνθησαν τήν ἀνάγκη δίνοντας στό κτήριο μία ὅσο τὸ δυνατόν σύγχρονη μορφή καί μέ ὕλικό τὸ τσιμέντο, κυρίως γιά λόγους πυρασφαλείας, νά μὴ ἀπομακρυνθοῦν ἀπὸ τὸ παραδοσιακὸ στυλ. *Όλη ἡ κατασκευὴ θυμίζει ὀπωσδήποτε τὰ γνωστά ξύλινα κτήρια τοῦ γκόλφ ὅπου τὸ ξύλο καί ἰδιαίτερα ἡ μορφή τῆς στέγης τὰ ἔδωσαν μέ τὸ περιβάλλον καί μέ τήν ἱστορία τοῦ τόπου.

Χρησιμοποιήθηκε σκυρόδεμα διαστρωμένο ἐπὶ τόπου, τὸ ὁποῖο ὑποκατέστησε τὸ ξύλο σὲ ὅλες του τίς ἐφαρμογές.

Ἐσωτερικά τὸ κτήριο παρουσιάζει ποικιλία στήν διαμόρφωση τῶν διαφόρων χώρων πού καλύπτουν ὅλες τίς ἀνάγκες τῶν ἐπισκεπτῶν.

Ἰδιαίτερη φροντίδα δόθηκε στό κυκλοφοριακὸ σὲ συνάρτηση πάντοτε μέ τίς διάφορες φάσεις λειτουργίας τοῦ γκόλφ.

The site chosen by the client for the clubhouse was a commanding escarpment overlooking a very dramatic view of an arm of Lake St. Louis to the East and panoramic views of the golf course in all other directions. The architects felt that the traditional form often associated with earlier golf clubhouses of a great country building with wide sheltering roofs, balconies, porches, etc. was still an appropriate expression in this building type rather than the more tightly controlled urban expression that was sometimes found in more recent clubhouses.

On investigation of the economics of structure, fire safety, insurance, etc., it was decided that the building should

be entirely fireproof and should not require a sprinkler system for protection. We, therefore, chose poured-in-place reinforced concrete as the material for the structure and general expression of the building, and adapted this material to the large barn-type structure often previously carried out in timber.

Two very important factors affected the development of the plan and general concept i.e. the exploitation of the dramatic views mentioned above and the effort to develop within one large strong framework a great variety of spaces appropriate to various moods of relaxation, eating, drinking, etc.